

- Marquette County had just peaked at an all-time high population of 74,101 (1980 Census)
- The economy had just gone into recession—unemployment reached 30%!
- After discussing economic troubles in various parts of the economy, “So far, K.I. Sawyer alone seems to have escaped this fate.”
- The Marquette Mall was the busy mall
- No microbreweries
- There was a grocery store across the street from the courthouse

# Changes to Land Use in Marquette County

1981



2016



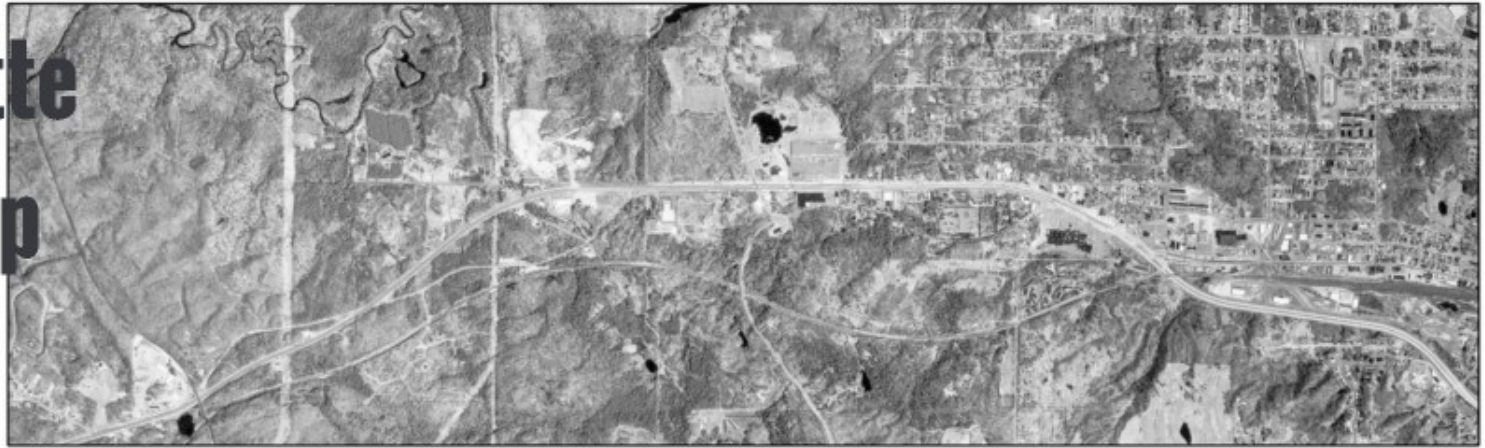
**Ishpeming**





# Marquette Township

1981



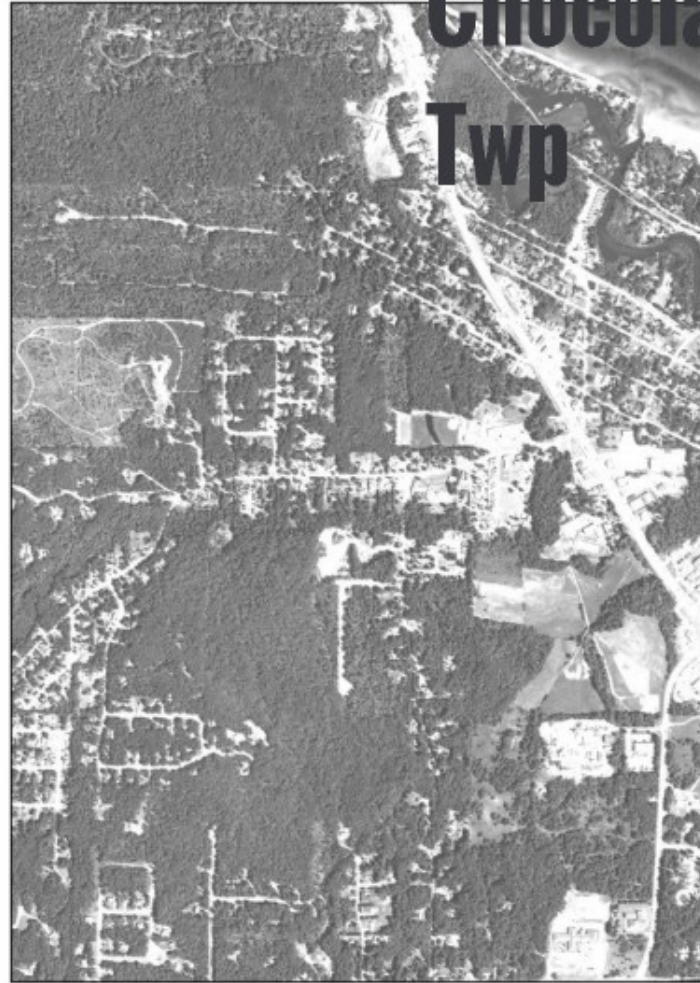
2016



1981



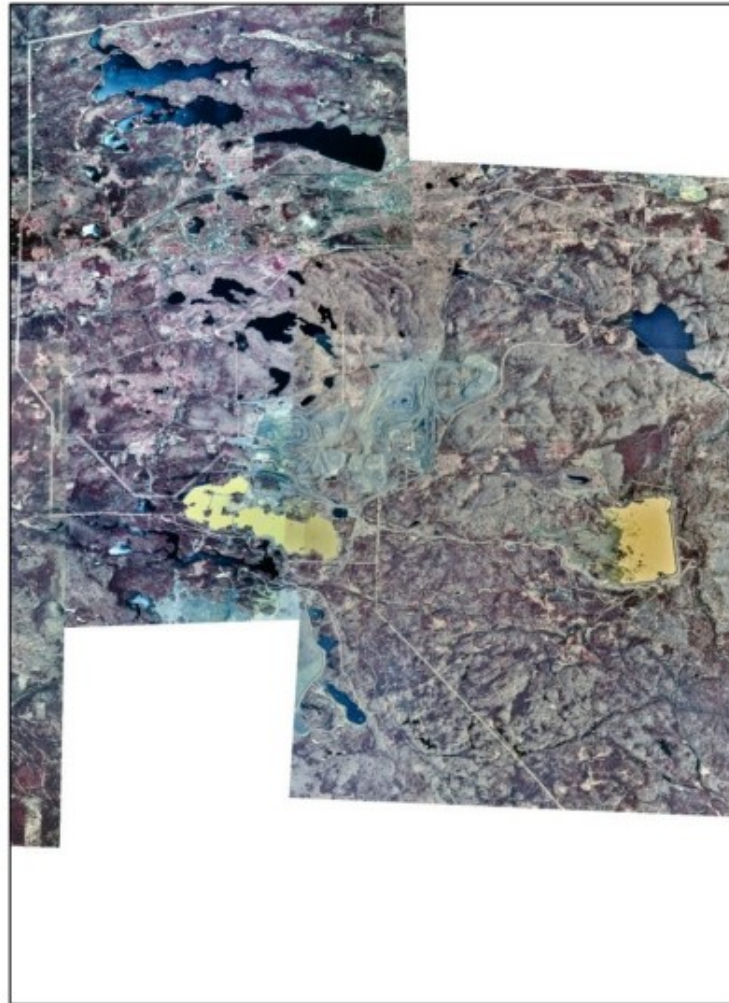
2016



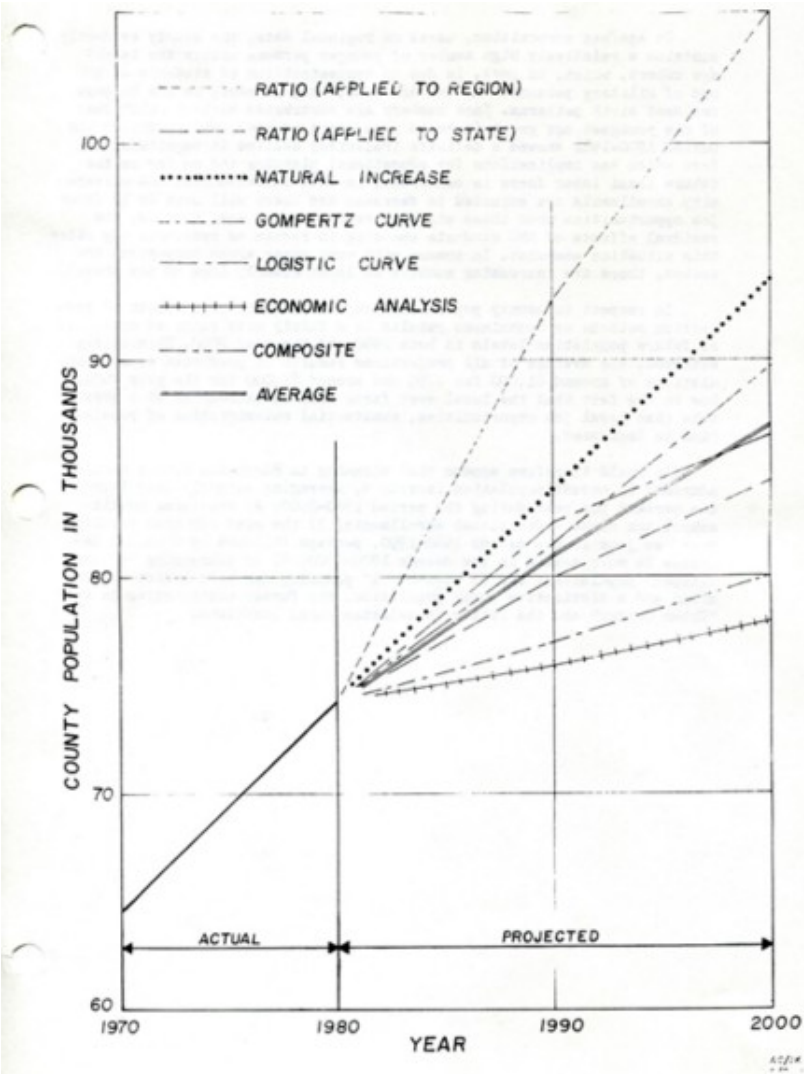
# Chocolay & Sands Twp



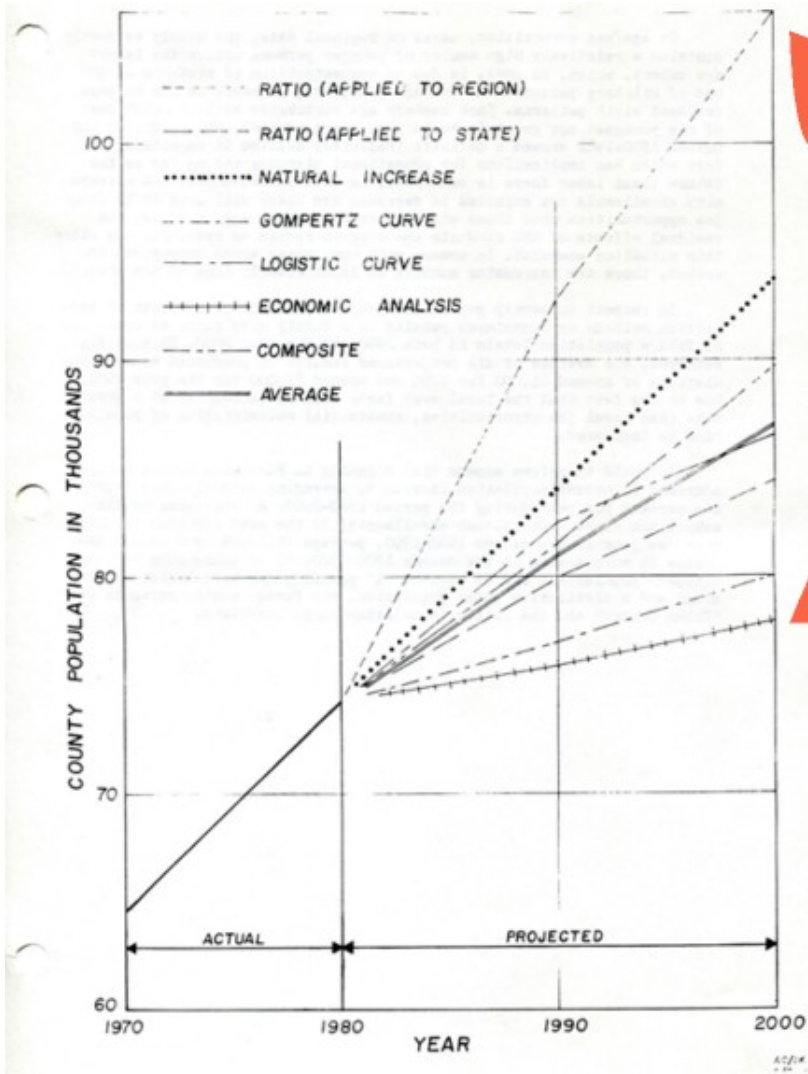
# Mining







# Population Projections from 1982 Plan

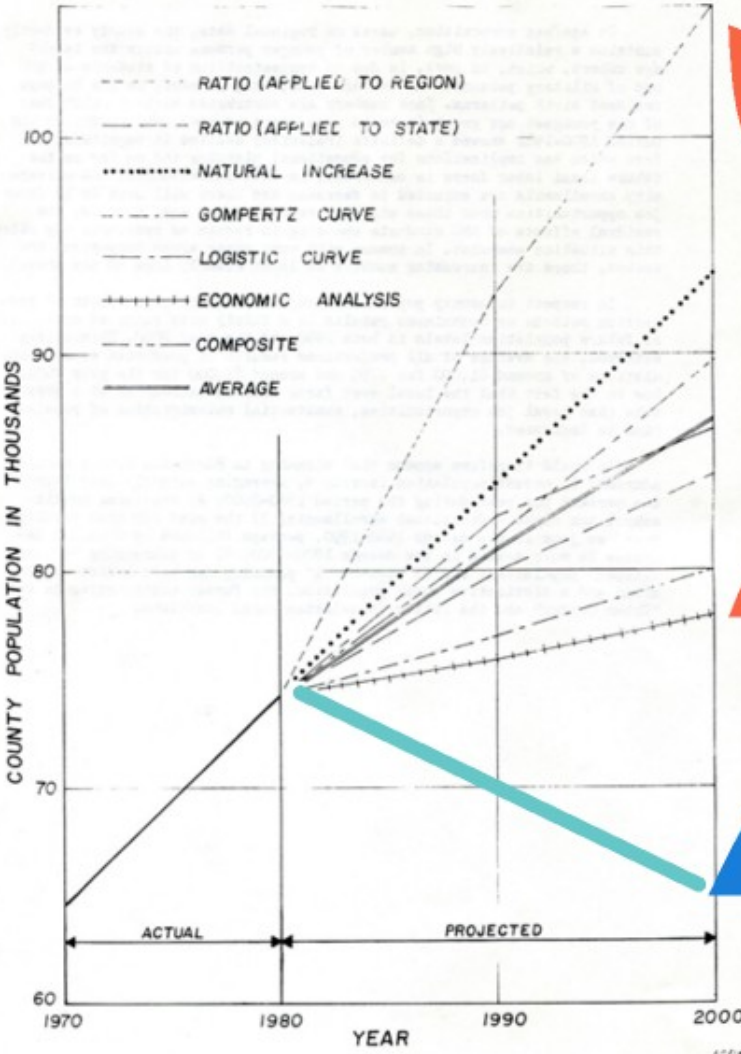


# Population Projections from 1982 Plan

106,000

78,000

# Population Projections from 1982 Plan



106,000

78,000

Actual population in 2000:  
64,634

## Major Events since 1982

- K.I. Sawyer closure
- Republic, Empire mines closed
- Eagle Mine opened
- Growth of US-41 corridor

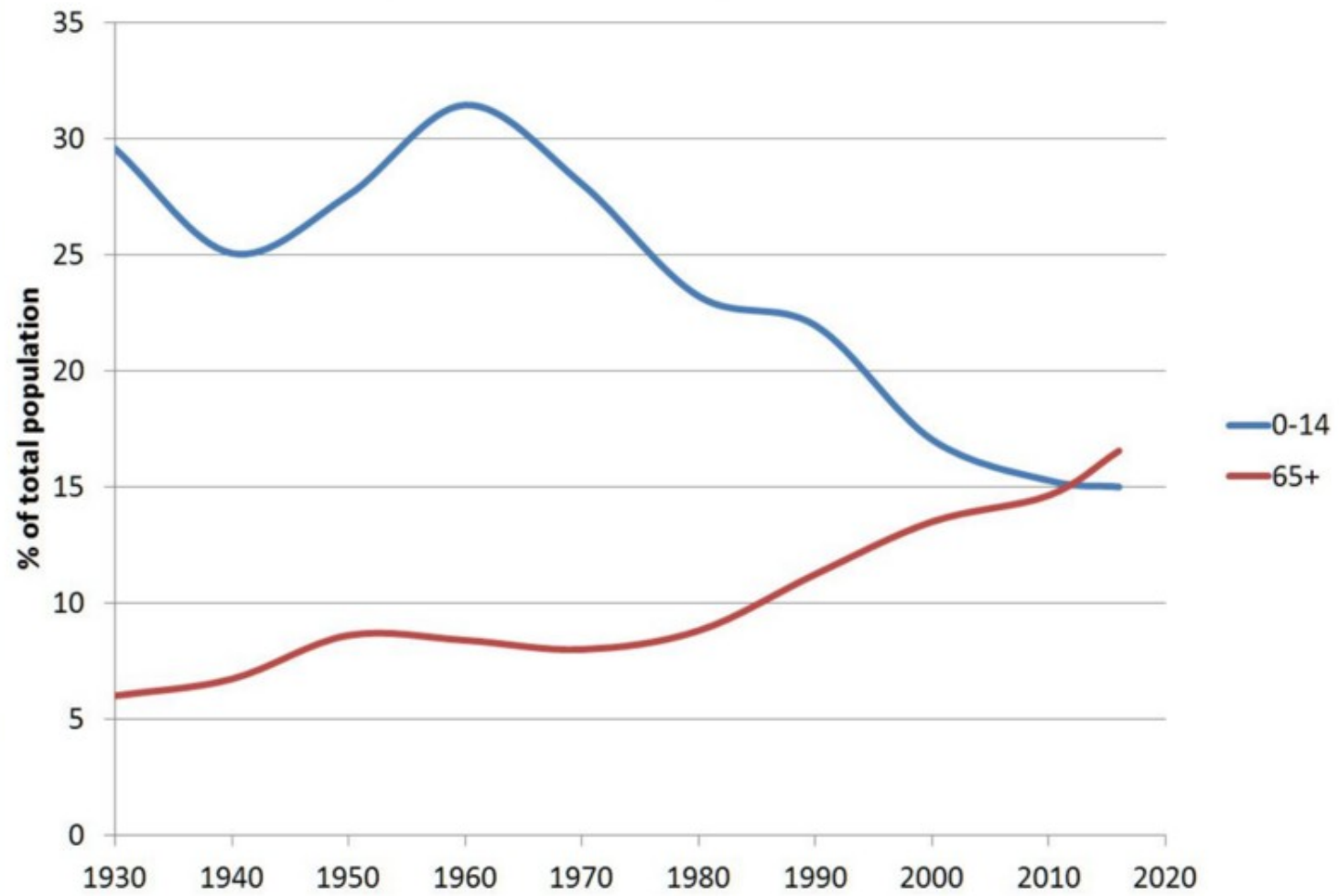
## Marquette County Births and Deaths, 1980-2017



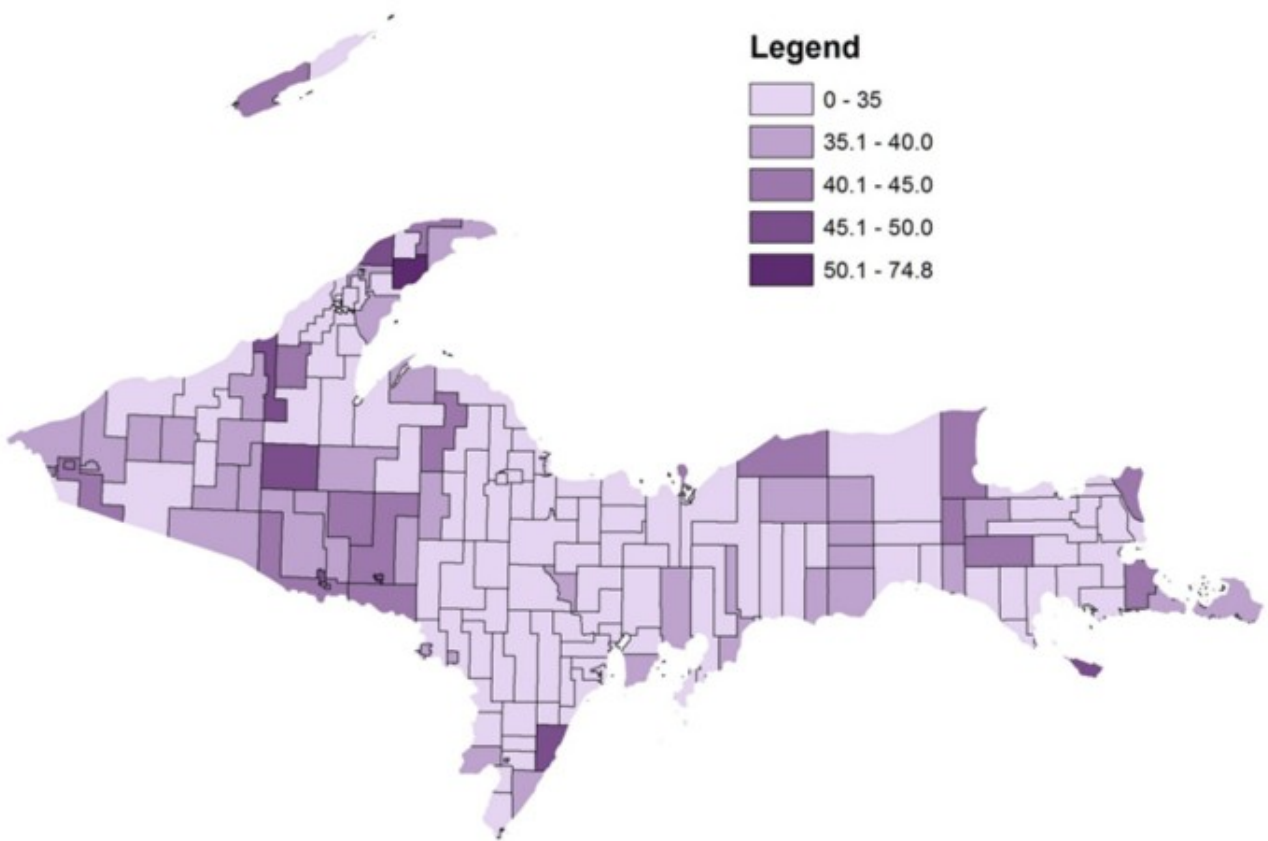
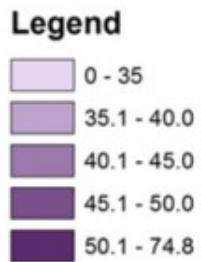
Source:  
Marquette County  
Clerk's Office

Chart Area

## Marquette County Population Change

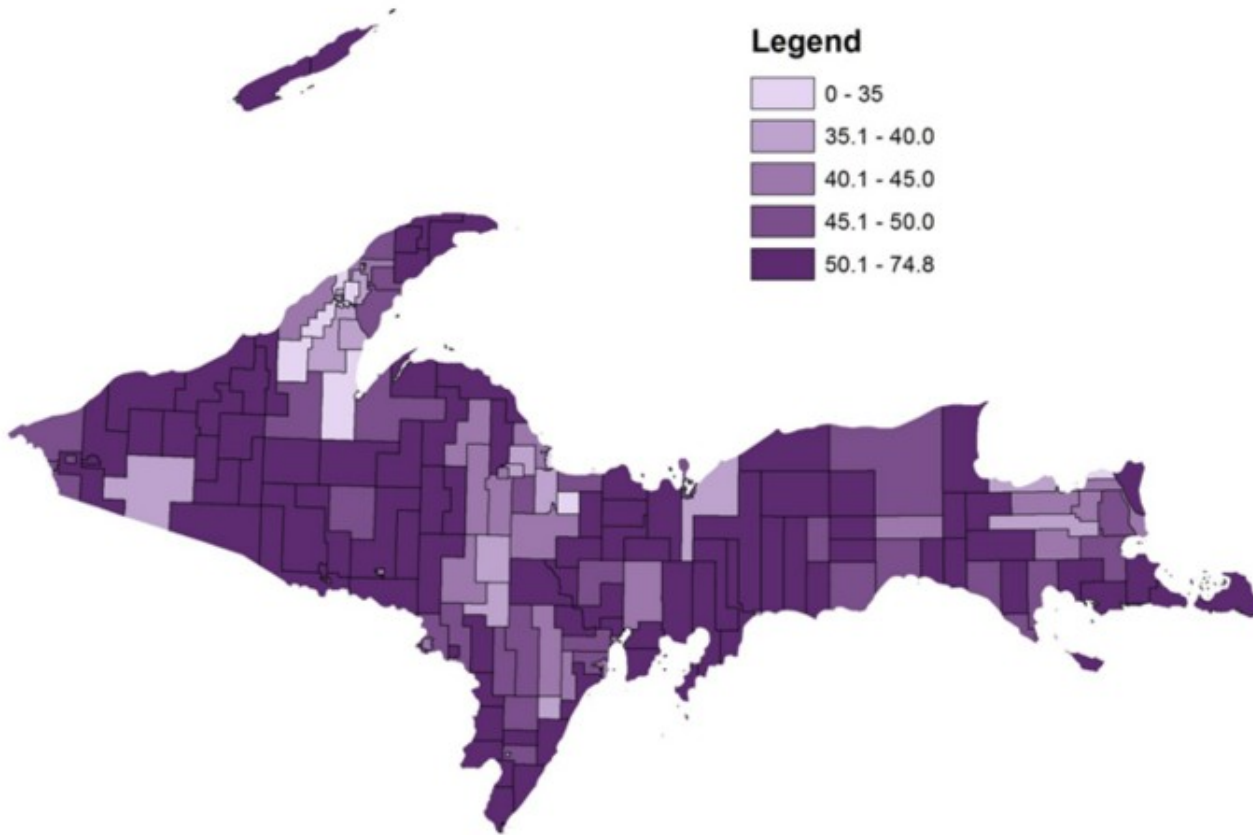
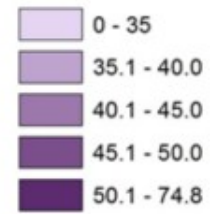


# Median Age, 1980

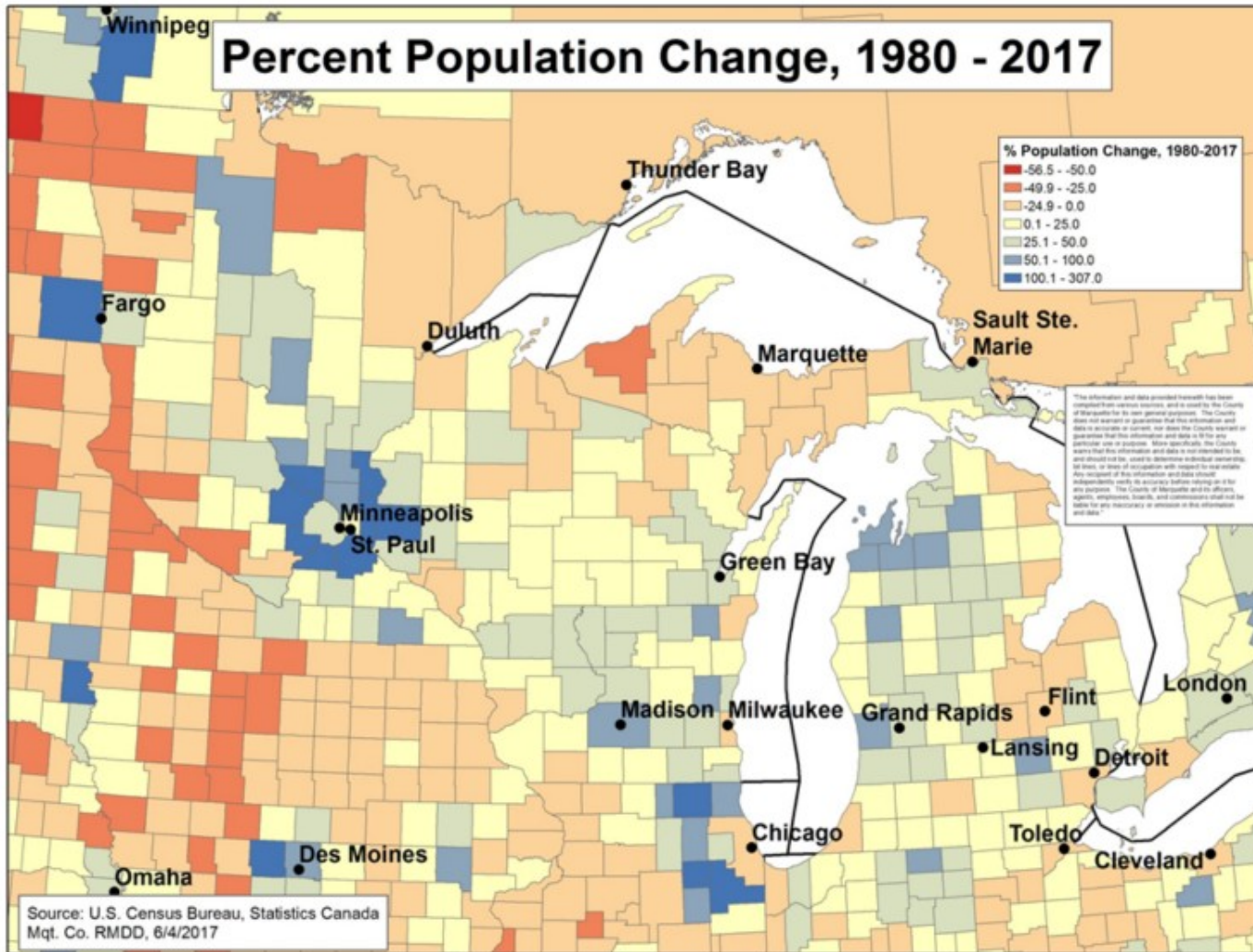


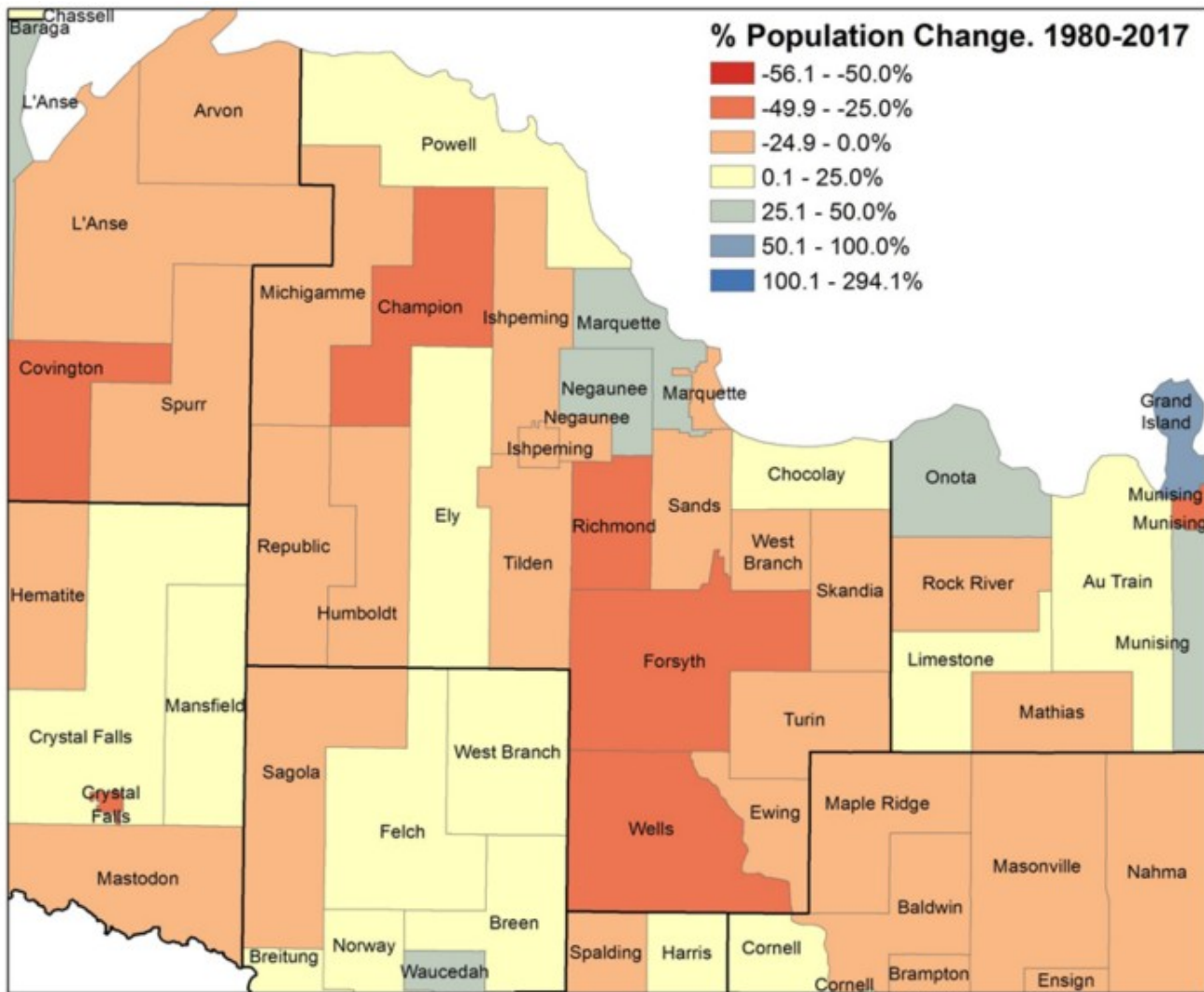
## Median Age, 2016

### Legend

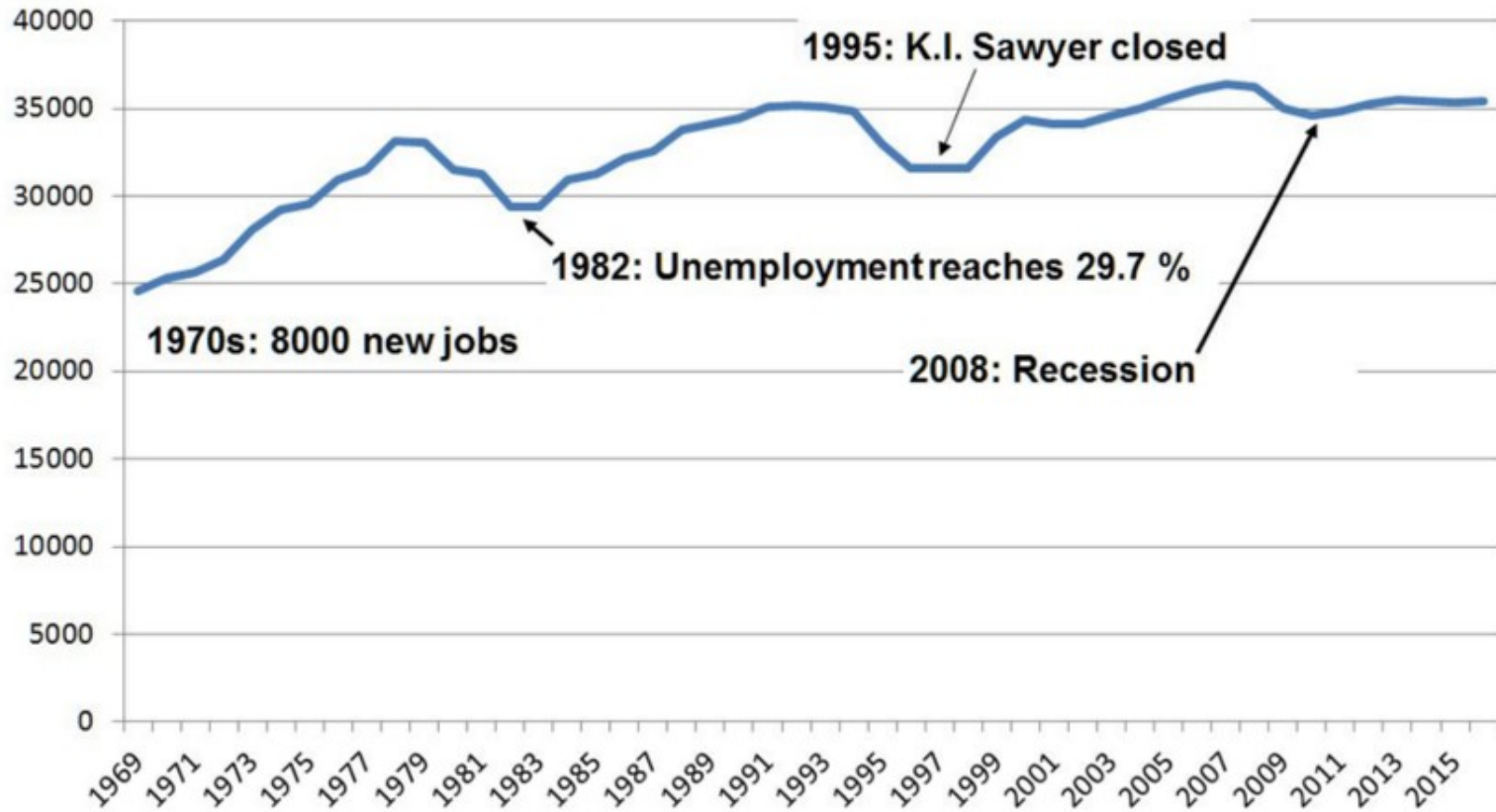






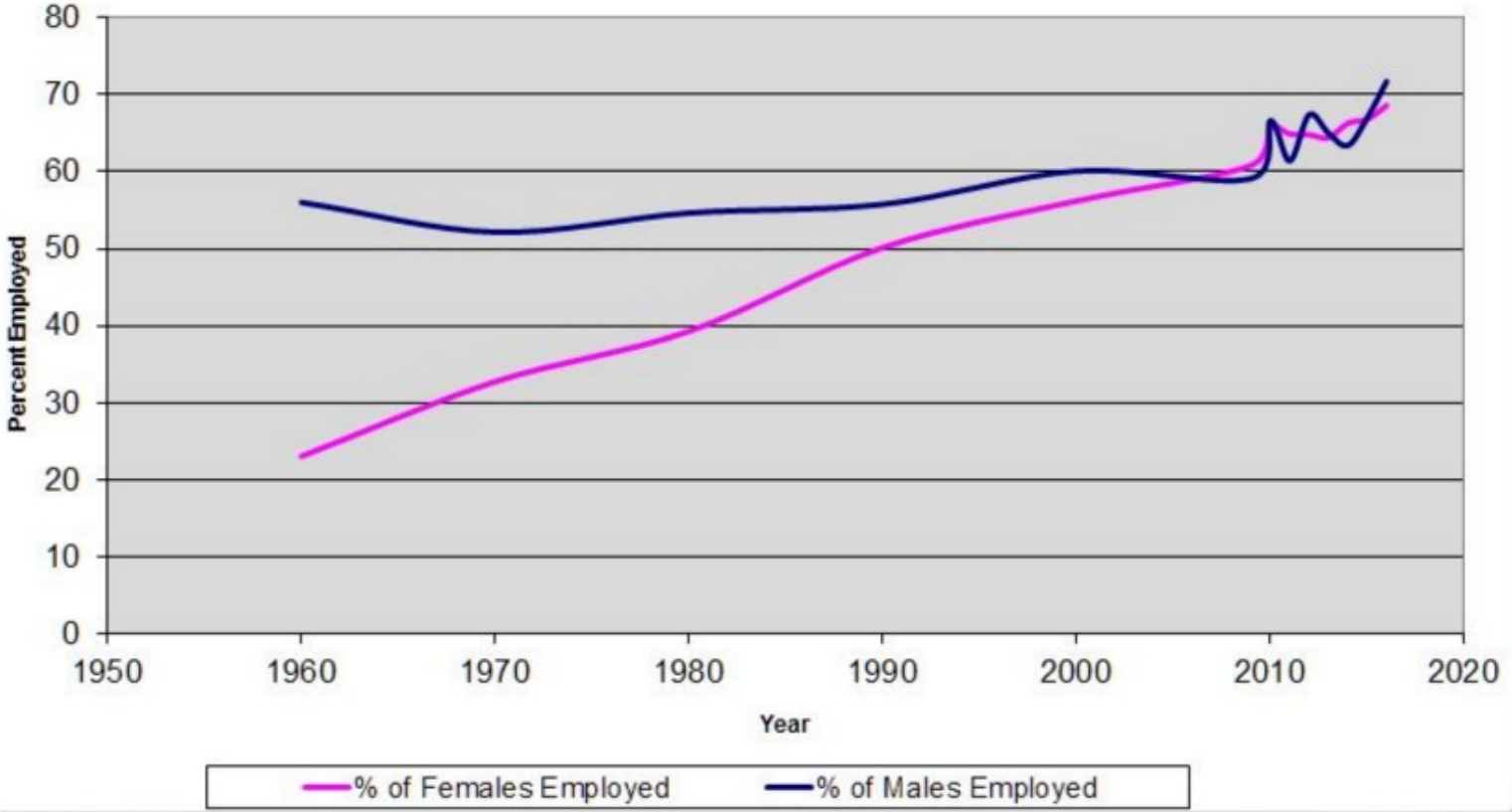


## Jobs in Marquette County

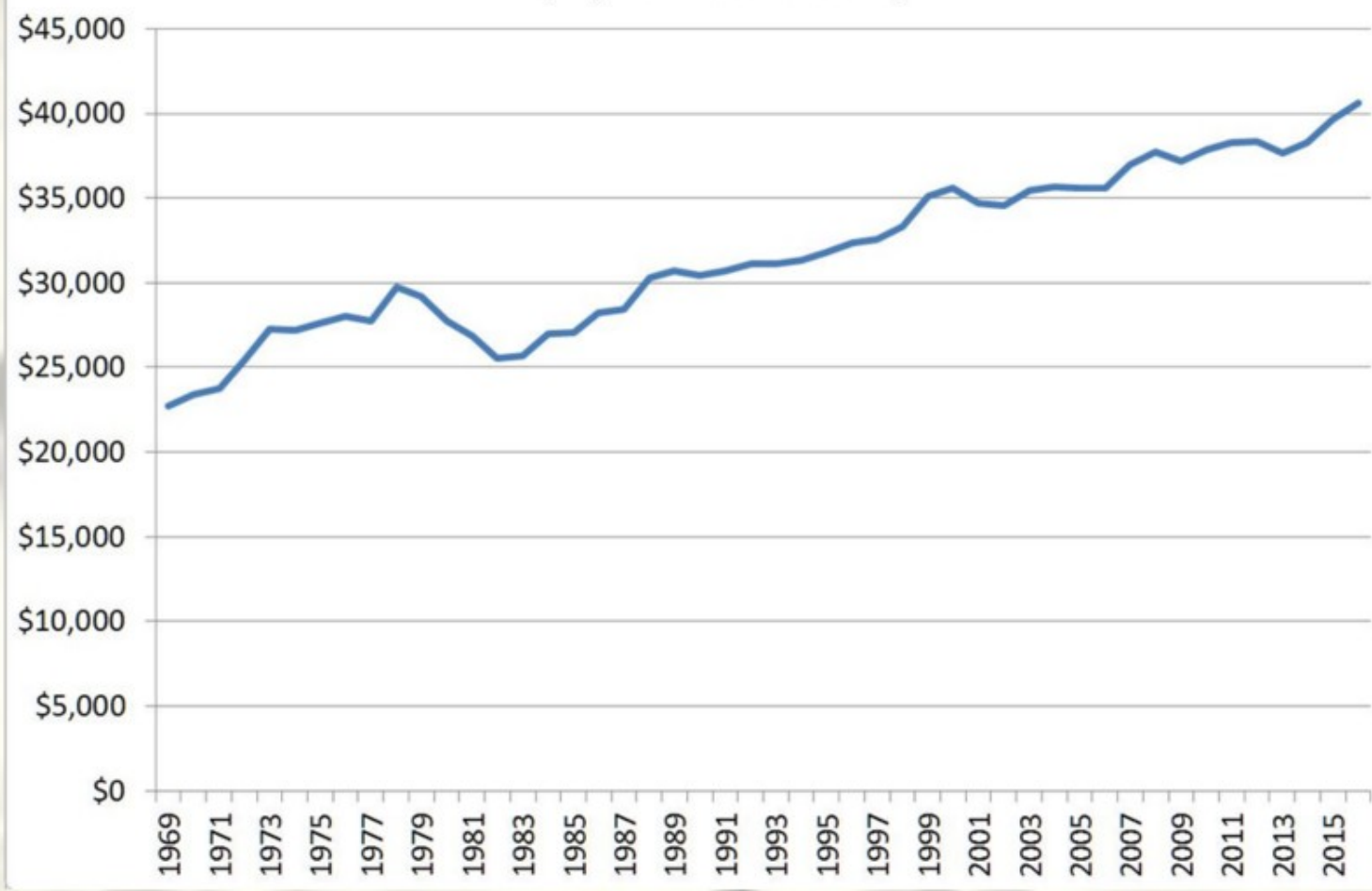


Source: Bureau of Economic Analysis

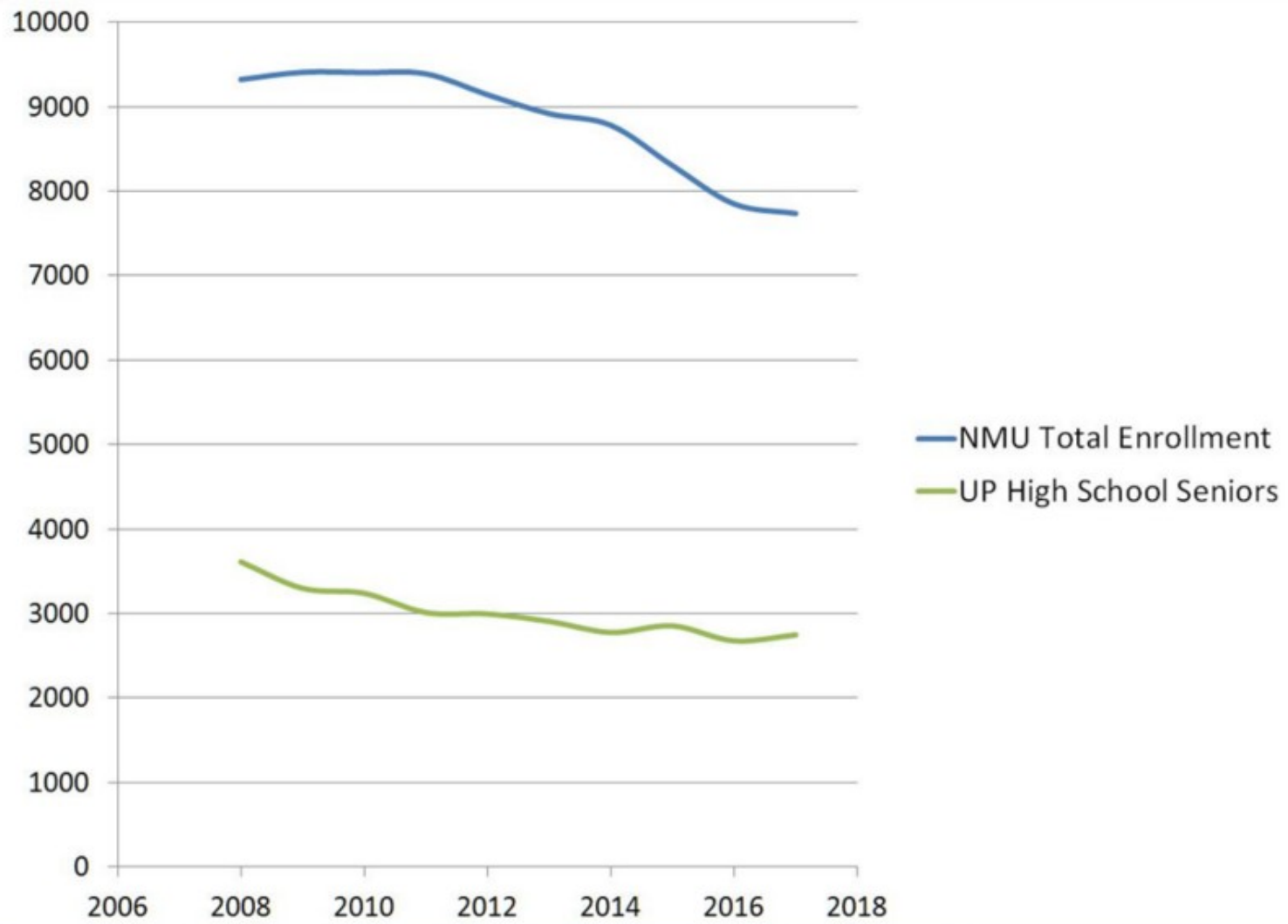
# Marquette County Employment Trends by Sex



Marquette County per capita income  
(adjusted for inflation)







# Implications

- We cannot assume that anything is permanent
- An aging population will demand different housing and will shop differently
- A new generation may have different preferences in housing